

Dell PowerConnect W-Series Instant Access Point Quick Start Guide

This Quick Start Guide will assist you to quickly connect and configure Dell PowerConnect W-Series Instant Access Point (IAP). To learn more about Dell PowerConnect W-Series Instant Access Points and for detailed configuration information, see the *Dell PowerConnect W-Series Instant Access Point 6.1.3.1-3.0.0.0 User Guide* at support.dell.com/manuals.

Getting Started

1. **Get an IP address**—You will require an IP address to connect to a network. To get an IP address from a DHCP server in your network:
 - a. Connect the IAP to an intermediate gateway router or switch that has connectivity to the DHCP server.
 - b. Power on the IAP. The IAP receives an IP address provided by the switch or router. Power the IAP either by plugging to an Ethernet cable coming from a 802.3af Power over Ethernet (PoE) switch or device, or by connecting it to an AC adapter.



Note: After the IAP starts up, it will try to do DHCP if static IP configuration is not available. If DHCP times out, a default IP within 169.254.x.y/16 subnet will be configured on the IAP.

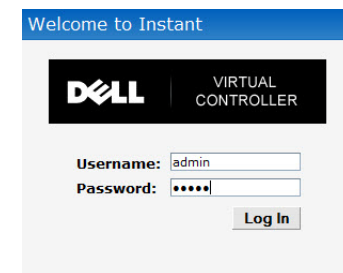
2. **Connect to the provisioning Wi-Fi network**—Connect a wireless enabled client to the provisioning Wi-Fi network. The provisioning network name is **instant**. [Table 1](#) shows how to find the instant wireless network using Windows 7 or Mac OS. Click the wireless network icon and select **instant network**.

Table 1 Connect to the provisioning network in Microsoft Windows and Apple Mac OS)



3. **Log in to the Dell PowerConnect W-Series Instant Access Point WebUI**—Open a web browser and navigate to instant.dell-pcw.com to access the Dell Instant login screen. If you enter any other URL, you are redirected to the Dell PowerConnect W-Series Instant Access Point login screen. In the login screen, as shown in [Figure 1](#), enter the following credentials:
 - Username - **admin**
 - Password - **admin**

Figure 1 WebUI Login Screen



4. **Select the Country Code**—A Country Code box, as shown in [Figure 2](#) is displayed after you successfully log in to the WebUI. Select your country code from the drop-down menu.

Figure 2 Country Code box



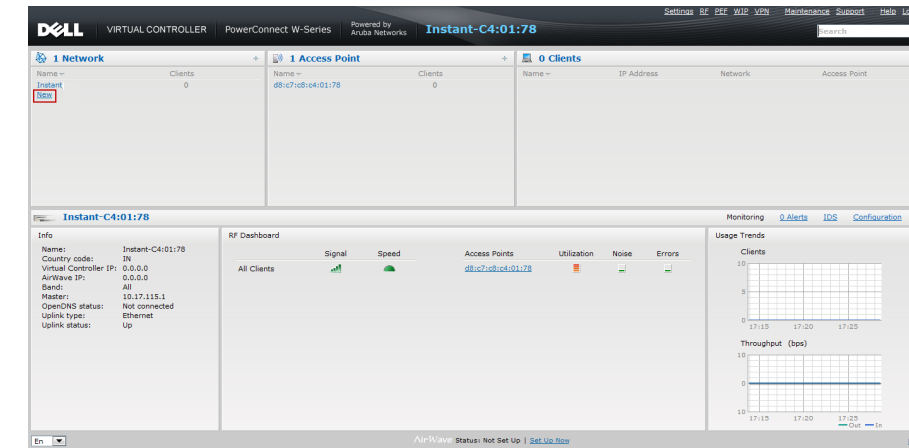
Note: The Country Code will not appear, and cannot be set for IAPs designated for US, Japan, and Israel.

Creating a Network

Dell PowerConnect W-Series Instant Access Point user interface is a standard web-based interface that allows you to configure and monitor an IAP network.

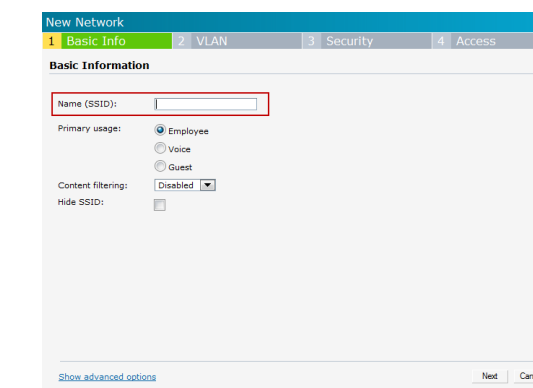
5. In the Network window, click the New link, as shown in [Figure 4](#).

Figure 3 Instant User Interface



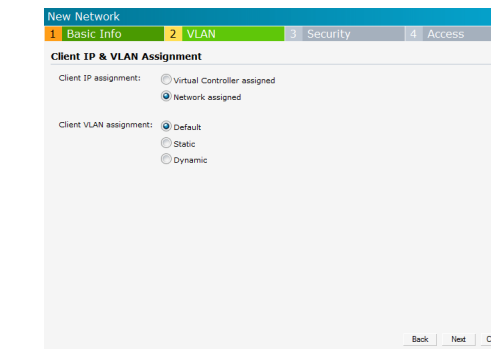
6. The New Network window appears as shown [Figure 4](#).

Figure 4 New Network Window



7. In the **Basic Info** tab, shown in [Figure 4](#), enter a name for the network in the **Name (SSID)** text box. Click **Next** to continue.
8. In the **VLAN** tab, shown in [Figure 5](#), select the required Client IP assignment and Client VLAN assignment options. Click **Next** to continue.

Figure 5 VLAN tab

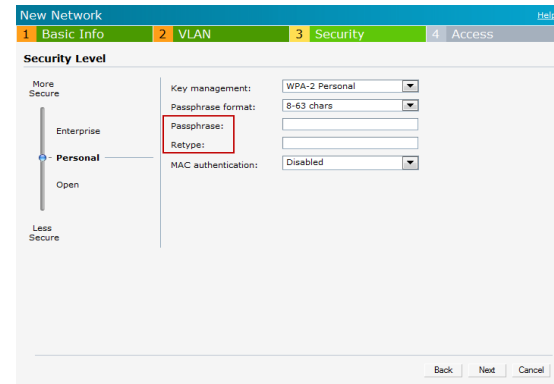


9. In the **Security** tab, shown in [Figure 6](#), enter a passphrase in the **Passphrase** and **Retype** fields. Click **Next** to continue.



Note: Dell recommends that you note the passphrase for future use.

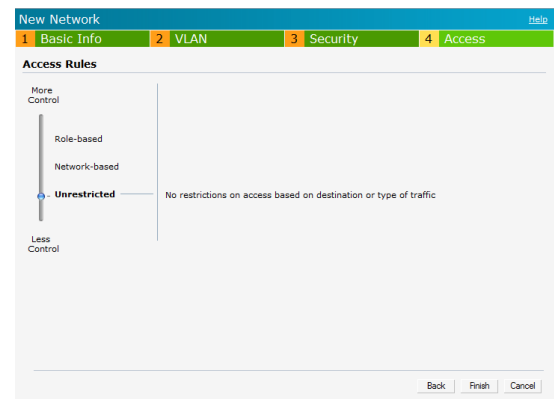
Figure 6 Security tab



Note: For additional security level options, refer to the *Dell PowerConnect W-Series Instant Access Point 6.1.3.1-3.0.0.0 User Guide*.

10. In the **Access** tab, the default option is **Unrestricted**. For information about the **Network-based** and **Role-based** access rule settings, see the *Dell PowerConnect W-Series Instant Access Point 6.1.3.1-3.0.0.0 User Guide* at support.dell.com/manuals.

Figure 7 Access tab



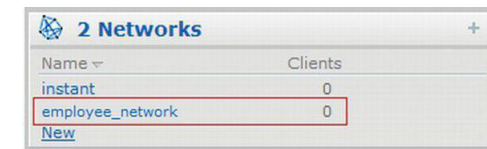
11. Click **Finish** to close the window. The new network that you created is now added to the **Networks** window.

Verifying WebUI and LEDs

After setting up Dell PowerConnect W-Series Instant Access Point and adding a network, you can use the WebUI and the LEDs to verify the operating status of Dell PowerConnect W-Series Instant Access Point.

- Using the WebUI—Verify the newly created network is displayed in the **Networks** window, as shown in [Figure 8](#).

Figure 8 Networks window



- Disconnect client from the instant provisioning network.
- Connect client to the network you created, as described in [step 2](#).
- Login to the Dell Instant Access Point WebUI, as in [step 3](#).

The instant provisioning network is automatically deleted and should no longer be present.



Note: Dell recommends that you change the administrator login password. For more information, see *Management Authentication Settings* in the *Dell PowerConnect W-Series Instant Access Point 6.1.3.1-3.0.0.0 User Guide* at support.dell.com/manuals.

- Using LEDs—Use the LEDs to verify the operating status of the IAP. The LED functionality is described in the Install Guide included with your Dell PowerConnect W-Series Instant Access Point.



Note: For **Uplink Connection:** Use the E0 port on W-IAP134/135 and W-RAP3WN/3WNP for uplink connections to a switch or router. For **Downlink Connection:** Use the E1 port on W-IAP134/135 for wired downlink connectivity. The E1 and E2 ports on W-RAP3WN/3WNP support wired downlink connectivity.



Note: The E2 port on W-RAP3WNP has PoE power sourcing capability (PSE) to supply power to any compliant 802.3af powered device (class 0-4).

Contacting Support

Web Support	
Main Site	dell.com
Support Site	support.dell.com
Dell Documentation	support.dell.com/manuals

Dell PowerConnect W-Series Instant Access Point

Quick Start Guide



Copyright

© 2012 Aruba Networks, Inc. Aruba Networks trademarks include  Airwave, Aruba Networks®, Aruba Wireless Networks®, the registered Aruba the Mobile Edge Company logo, and Aruba Mobility Management System®. Dell™, the DELL™ logo, and PowerConnect™ are trademarks of Dell Inc.

All rights reserved. Specifications in this manual are subject to change without notice. Originated in the USA. All other trademarks are the property of their respective owners.

Open Source Code

Certain Aruba products include Open Source software code developed by third parties, including software code subject to the GNU General Public License (GPL), GNU Lesser General Public License (LGPL), or other Open Source Licenses. The Open Source code used can be found at this site:

http://www.arubanetworks.com/open_source

Legal Notice

The use of Aruba Networks, Inc. switching platforms and software, by all individuals or corporations, to terminate other vendors' VPN client devices constitutes complete acceptance of liability by that individual or corporation for this action and indemnifies, in full, Aruba Networks, Inc. from any and all legal actions that might be taken against it with respect to infringement of copyright on behalf of those vendors.

